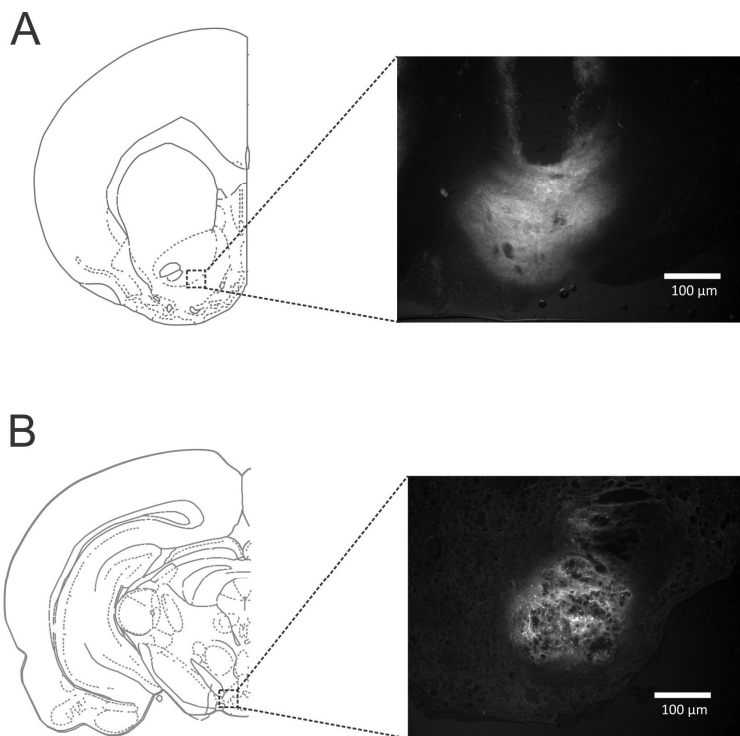


**Fig. S1:** Placement of microdialysis probes and microinjection cannulae. Distance from the bregma is indicated to the right. **(A)** Black bars represent the location of microdialysis membranes. **(B)** Black circles represent the location of microinjection needle tips in the nucleus accumbens (left) and ventral tegmental area (right).



**Fig. S2:** Diffusion of dansyl-tagged interference peptide. Examples of the diffusion of the fluorescent dansyl-Tat-GluA2<sub>cy</sub> peptide within **(A)** the nucleus accumbens and **(B)** ventral tegmental area following intracranial microinjection (0.3 µL total volume). The schematic diagram on the left illustrates the location of the peptide diffusion area shown in the fluorescent image on the right.