

Appendix 1 to Björnsdotter M, Davidovic M, Karjalainen L, et al. Grey matter correlates of autistic traits in women with anorexia nervosa. *J Psychiatry Neurosci* 2017.

DOI: 10.1503/jpn.170072

© 2017 Joule Inc., or its licensors

Online appendices are unedited and posted as supplied by the authors.

Supplementary materials

Fig. S1. Social cognition regions of interest. Brain regions obtained from the 'theory of mind' meta-analysis (pFDR<0.01).

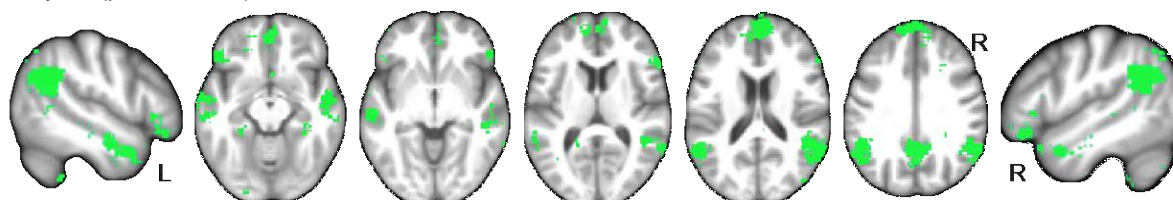


Table S1. Publications identified in Neurosynth search using the search term 'theory mind'.

Publication title	Authors	Journal	Weight
Individual differences in the theory of mind and superior temporal sulcus.	Otsuka Y, Osaka N, Ikeda T, Osaka M	Neuroscience letters	0.462
Reading the mind in cartoons and stories: an fMRI study of 'theory of mind' in verbal and nonverbal tasks.	Gallagher HL, Happe F, Brunswick N, Fletcher PC, Frith U, Frith CD	Neuropsychologia	0.405
The neural correlates of theory of mind within interpersonal interactions.	Rilling JK, Sanfey AG, Aronson JA, Nystrom LE, Cohen JD	NeuroImage	0.399
An fMRI study of theory of mind in schizophrenic patients with "passivity" symptoms.	Brune M, Lissek S, Fuchs N, Witthaus H, Peters S, Nicolas V, Juckel G, Tegenthoff M	Neuropsychologia	0.354
Social cognitive deficits and their neural correlates in progressive supranuclear palsy.	Ghosh BC, Calder AJ, Peers PV, Lawrence AD, Acosta-Cabrero J, Pereira JM, Hodges JR, Rowe JB	Brain : a journal of neurology	0.325
Activity in right temporo-parietal junction is not selective for theory-of-mind.	Mitchell JP	Cerebral cortex	0.321
First-person perspective effects on theory of mind without self-reference.	Otsuka Y, Osaka N, Yaoi K, Osaka M	PloS one	0.301
Differentiable cortical networks for inferences concerning people's intentions versus physical causality.	Mason RA, Just MA	Human brain mapping	0.299
Action processing and mirror neuron function in patients with amyotrophic lateral sclerosis: an fMRI study.	Jelsone-Swain L, Persad C, Burkard D, Welsh RC	PloS one	0.295
Right anterior temporal lobe dysfunction underlies theory of mind impairments in semantic dementia.	Irish M, Hodges JR, Piguet O	Brain : a journal of neurology	0.287
Age-related neural differences in affiliation and isolation.	Beadle JN, Yoon C, Gutchess AH	Cognitive, affective & behavioral neuroscience	0.286
Person-specific theory of mind in medial pFC.	Welborn BL, Lieberman MD	Journal of cognitive neuroscience	0.268
Do visual perspective tasks need theory of mind?	Aichhorn M, Perner J, Kronbichler M, Staffen W, Ladurner G	NeuroImage	0.267
The neural substrates of person comparison--an fMRI study.	Lindner M, Hundhammer T, Ciaramidaro A, Linden DE, Mussweiler T	NeuroImage	0.266
Differential role of the orbital frontal lobe in emotional versus cognitive perspective-taking.	Hynes CA, Baird AA, Grafton ST	Neuropsychologia	0.258

Appendix 1 to Björnsson M, Davidovic M, Karjalainen L, et al. Grey matter correlates of autistic traits in women with anorexia nervosa. *J Psychiatry Neurosci* 2017.

DOI: 10.1503/jpn.170072

© 2017 Joule Inc., or its licensors

Online appendices are unedited and posted as supplied by the authors.

Working together may be better: activation of reward centers during a cooperative maze task.	Krill AL, Platek SM	PloS one	0.254
Cognitive and affective theory of mind share the same local patterns of activity in posterior temporal but not medial prefrontal cortex.	Corradi-Dell'acqua C, Hofstetter C, Vuilleumier P	Social cognitive and affective neuroscience	0.254
The activation of theory of mind network differentiates between point-to-self and point-to-other verbal jokes: an fMRI study.	Feng S, Ye X, Mao L, Yue X	Neuroscience letters	0.216
People thinking about thinking people. The role of the temporo-parietal junction in "theory of mind".	Saxe R, Kanwisher N	NeuroImage	0.185
Comprehension of implicit meanings in social situations involving irony: a functional MRI study.	Wakusawa K, Sugiura M, Sassa Y, Jeong H, Horie K, Sato S, Yokoyama H, Tsuchiya S, Inuma K, Kawashima R	NeuroImage	0.185
Patterns of brain activity supporting autobiographical memory, prospection, and theory of mind, and their relationship to the default mode network.	Spreng RN, Grady CL	Journal of cognitive neuroscience	0.182
Counterfactual thinking: an fMRI study on changing the past for a better future.	Van Hoeck N, Ma N, Ampe L, Baetens K, Vandekerckhove M, Van Overwalle F	Social cognitive and affective neuroscience	0.172
Neural correlates of irony comprehension: the role of schizotypal personality traits.	Rapp AM, Mutschler DE, Wild B, Erb M, Lengsfeld I, Saur R, Grodd W	Brain and language	0.17
Neural correlates related to action observation in expert archers.	Kim YT, Seo JH, Song HJ, Yoo DS, Lee HJ, Lee J, Lee G, Kwon E, Kim JG, Chang Y	Behavioural brain research	0.165
Prefrontal cortical dysfunction during visual perspective-taking in schizophrenia.	Eack SM, Wojtalik JA, Newhill CE, Keshavan MS, Phillips ML	Schizophrenia research	0.165
Contagious yawning and the brain.	Platek SM, Mohamed FB, Gallup GG Jr	Brain research. Cognitive brain research	0.152
Common and unique neural correlates of autobiographical memory and theory of mind.	Rabin JS, Gilboa A, Stuss DT, Mar RA, Rosenbaum RS	Journal of cognitive neuroscience	0.146
Interdependent self-construal and neural representations of self and mother.	Ray RD, Shelton AL, Hollon NG, Matsumoto D, Frankel CB, Gross JJ, Gabrieli JD	Social cognitive and affective neuroscience	0.141
Cognitive and neural foundations of religious belief.	Kapogiannis D, Barbey AK, Su M, Zamboni G, Krueger F, Grafman J	Proceedings of the National Academy of Sciences of the United States of America	0.137
Ventromedial prefrontal volume predicts understanding of others and social network size.	Lewis PA, Rezaie R, Brown R, Roberts N, Dunbar RI	NeuroImage	0.132
Neural correlates of social cognition in naturalistic settings: a model-free analysis approach.	Wolf I, Dziobek I, Heekeren HR	NeuroImage	0.131
Can machines think? Interaction and perspective taking with robots investigated via fMRI.	Krach S, Hegel F, Wrede B, Sagerer G, Binkofski F, Kircher T	PloS one	0.127
The neural origins of superficial and individuated judgments about ingroup and outgroup members.	Freeman JB, Schiller D, Rule NO, Ambady N	Human brain mapping	0.127
Online mentalising investigated with functional MRI.	Kircher T, Blumel I, Marjoram D, Lataster T, Krabbendam L, Weber J, van Os J, Krach S	Neuroscience letters	0.125
Distinct neural systems involved in agency and animacy detection.	Gobbini MI, Gentili C, Ricciardi E, Bellucci C, Salvini P, Laschi C, Guazzelli M, Pietrini P	Journal of cognitive neuroscience	0.124

Appendix 1 to Björnsdotter M, Davidovic M, Karjalainen L, et al. Grey matter correlates of autistic traits in women with anorexia nervosa. *J Psychiatry Neurosci* 2017.

DOI: 10.1503/jpn.170072

© 2017 Joule Inc., or its licensors

Online appendices are unedited and posted as supplied by the authors.

Social and emotional attachment in the neural representation of faces.	Gobbini MI, Leibenluft E, Santiago N, Haxby JV	NeuroImage	0.123
Neural correlates of observing pretend play in which one object is represented as another.	Whitehead C, Marchant JL, Craik D, Frith CD	Social cognitive and affective neuroscience	0.12
Guilt-specific processing in the prefrontal cortex.	Wagner U, N'Diaye K, Ethofer T, Vuilleumier P	Cerebral cortex (New York, N.Y. : 1991)	0.12
Caught in the act: the impact of audience on the neural response to morally and socially inappropriate behavior.	Finger EC, Marsh AA, Kamel N, Mitchell DG, Blair JR	NeuroImage	0.117
Individual differences in anthropomorphic attributions and human brain structure.	Cullen H, Kanai R, Bahrami B, Rees G	Social cognitive and affective neuroscience	0.117
Increased Visual Stimulation Systematically Decreases Activity in Lateral Intermediate Cortex.	Nasr S, Stemmann H, Vanduffel W, Tootell RB	Cerebral cortex (New York, N.Y. : 1991)	0.117
Reduced caudate volume and enhanced striatal-DMN integration in chess experts.	Duan X, He S, Liao W, Liang D, Qiu L, Wei L, Li Y, Liu C, Gong Q, Chen H	NeuroImage	0.115
Authenticity affects the recognition of emotions in speech: behavioral and fMRI evidence.	Drolet M, Schubotz RI, Fischer J	Cognitive, affective & behavioral neuroscience	0.114
Biological motion processing: the left cerebellum communicates with the right superior temporal sulcus.	Sokolov AA, Erb M, Gharabaghi A, Grodd W, Tatagiba MS, Pavlova MA	NeuroImage	0.111
Irony comprehension and context processing in schizophrenia during remission--a functional MRI study.	Varga E, Simon M, Tenyi T, Schnell Z, Hajnal A, Orsi G, Doczi T, Komoly S, Janszky J, Furedi R, Hamvas E, Fekete S, Herold R	Brain and language	0.111
Representation, control, or reasoning? Distinct functions for theory of mind within the medial prefrontal cortex.	Hartwright CE, Apperly IA, Hansen PC	Journal of cognitive neuroscience	0.11
The theory-of-mind network in support of action verb comprehension: Evidence from an fMRI study.	Lin N, Bi Y, Zhao Y, Luo C, Li X	Brain and language	0.109
Impaired neural processing of social attribution in anorexia nervosa.	McAdams CJ, Krawczyk DC	Psychiatry research	0.106
Atypical activation of the mirror neuron system during perception of hand motion in autism.	Martineau J, Andersson F, Barthelemy C, Cottier JP, Destrieux C	Brain research	0.105
Alterations of theory of mind network activation in chronic cannabis users.	Roser P, Lissek S, Tegenthoff M, Nicolas V, Juckel G, Brune M	Schizophrenia research	0.105
How the brain predicts people's behavior in relation to rules and desires. Evidence of a medio-prefrontal dissociation.	Corradi-Dell'Acqua C, Turri F, Kaufmann L, Clement F, Schwartz S	Cortex; a journal devoted to the study of the nervous system and behavior	0.105
The reward of a good joke: neural correlates of viewing dynamic displays of stand-up comedy.	Franklin RG Jr, Adams RB Jr	Cognitive, affective & behavioral neuroscience	0.104
Cultural and linguistic influence on neural bases of 'Theory of Mind': an fMRI study with Japanese bilinguals.	Kobayashi C, Glover GH, Temple E	Brain and language	0.103

Appendix 1 to Björnsdotter M, Davidovic M, Karjalainen L, et al. Grey matter correlates of autistic traits in women with anorexia nervosa. *J Psychiatry Neurosci* 2017.

DOI: 10.1503/jpn.170072

© 2017 Joule Inc., or its licensors

Online appendices are unedited and posted as supplied by the authors.

Nonmotor aspects of action concepts.	Leshinskaya A, Caramazza A	Journal of cognitive neuroscience	0.102
Anatomical and temporal architecture of theory of mind: a MEG insight into the early stages.	Vistoli D, Brunet-Gouet E, Baup-Bobin E, Hardy-Bayle MC, Passerieux C	NeuroImage	0.101
Cultural and linguistic effects on neural bases of 'Theory of Mind' in American and Japanese children.	Kobayashi C, Glover GH, Temple E	Brain research	0.1
Temporo-parietal junction activity in theory-of-mind tasks: falseness, beliefs, or attention.	Aichhorn M, Perner J, Weiss B, Kronbichler M, Staffen W, Ladurner G	Journal of cognitive neuroscience	0.098
Traumatic brain injury affects the frontomedian cortex--an event-related fMRI study on evaluative judgments.	Schroeter ML, Ettrich B, Menz M, Zysset S	Neuropsychologia	0.098
Can Harry Potter still put a spell on us in a second language? An fMRI study on reading emotion-laden literature in late bilinguals.	Hsu CT, Jacobs AM, Conrad M	Cortex; a journal devoted to the study of the nervous system and behavior	0.097
A visual joke fMRI investigation into Theory of Mind and enhanced risk of schizophrenia.	Marjoram D, Job DE, Whalley HC, Gountouna VE, McIntosh AM, Simonotto E, Cunningham-Owens D, Johnstone EC, Lawrie S	NeuroImage	0.096
Cooperation and deception recruit different subsets of the theory-of-mind network.	Lissek S, Peters S, Fuchs N, Witthaus H, Nicolas V, Tegenthoff M, Juckel G, Brune M	PloS one	0.096
Beyond the Language Given: The Neural Correlates of Inferring Speaker Meaning.	Basnakova J, Weber K, Petersson KM, van Berkum J, Hagoort P	Cerebral cortex (New York, N.Y. : 1991)	0.096
Recognizing the authenticity of emotional expressions: F0 contour matters when you need to know.	Drolet M, Schubotz RI, Fischer J	Frontiers in human neuroscience	0.096
Dimensional schizotypy and social cognition: an fMRI imaging study.	Wang Y, Liu WH, Li Z, Wei XH, Jiang XQ, Neumann DL, Shum DH, Cheung EF, Chan RC	Frontiers in behavioral neuroscience	0.096
fMRI investigation of working memory for faces in autism: visual coding and underconnectivity with frontal areas.	Koshino H, Kana RK, Keller TA, Cherkassky VL, Minshew NJ, Just MA	Cerebral cortex (New York, N.Y. : 1991)	0.095
Dysfunction of the social brain in schizophrenia is modulated by intention type: an fMRI study.	Walter H, Ciaramidaro A, Adenzato M, Vasic N, Ardito RB, Erk S, Bara BG	Social cognitive and affective neuroscience	0.095
Ongoing neural development of affective theory of mind in adolescence.	Vetter NC, Weigelt S, Dohnel K, Smolka MN, Kliegel M	Social cognitive and affective neuroscience	0.095
BOLD signal in insula is differentially related to cardiac function during compassion meditation in experts vs. novices.	Lutz A, Greischar LL, Perlman DM, Davidson RJ	NeuroImage	0.094
Thinking about intentions.	den Ouden HE, Frith U, Frith C, Blakemore SJ	NeuroImage	0.093
Association of trait emotional intelligence and individual fMRI-activation patterns during the perception of social signals from voice and face.	Kreifelts B, Ethofer T, Huberle E, Grodd W, Wildgruber D	Human brain mapping	0.093
Experimental human endotoxemia enhances brain activity during social cognition.	Kullmann JS, Grigoleit JS, Wolf OT, Engler H, Oberbeck R, Elsenbruch S, Forsting M, Schedlowski M, Gizewski ER	Social cognitive and affective neuroscience	0.092

Appendix 1 to Björnsdotter M, Davidovic M, Karjalainen L, et al. Grey matter correlates of autistic traits in women with anorexia nervosa. *J Psychiatry Neurosci* 2017.

DOI: 10.1503/jpn.170072

© 2017 Joule Inc., or its licensors

Online appendices are unedited and posted as supplied by the authors.

The neural bases of directed and spontaneous mental state attributions to group agents.	Jenkins AC, Dodell-Feder D, Saxe R, Knobe J	PloS one	0.092
Attributions on the brain: neuro-imaging dispositional inferences, beyond theory of mind.	Harris LT, Todorov A, Fiske ST	NeuroImage	0.091
Gender differences in creative thinking: behavioral and fMRI findings.	Abraham A, Thybusch K, Pieritz K, Hermann C	Brain imaging and behavior	0.091
The emotion potential of words and passages in reading Harry Potter--an fMRI study.	Hsu CT, Jacobs AM, Citron FM, Conrad M	Brain and language	0.091
The structural neuroanatomy of music emotion recognition: evidence from frontotemporal lobar degeneration.	Omar R, Henley SM, Bartlett JW, Hailstone JC, Gordon E, Sauter DA, Frost C, Scott SK, Warren JD	NeuroImage	0.09
Moral decision-making, ToM, empathy and the default mode network.	Reniers RL, Corcoran R, Vollm BA, Mashru A, Howard R, Liddle PF	Biological psychology	0.09
Multimodal human communication--targeting facial expressions, speech content and prosody.	Regenbogen C, Schneider DA, Gur RE, Schneider F, Habel U, Kellermann T	NeuroImage	0.09
Interaction vs. observation: distinctive modes of social cognition in human brain and behavior? A combined fMRI and eye-tracking study.	Tylen K, Allen M, Hunter BK, Roepstorff A	Frontiers in human neuroscience	0.09
Neural evidence that utterance-processing entails mentalizing: the case of irony.	Spotorno N, Koun E, Prado J, Van Der Henst JB, Noveck IA	NeuroImage	0.089
Me, myself and I: temporal dysfunctions during self-evaluation in patients with schizophrenia.	Pauly KD, Kircher TT, Schneider F, Habel U	Social cognitive and affective neuroscience	0.089
Functional Organization of Social Perception and Cognition in the Superior Temporal Sulcus.	Deen B, Koldewyn K, Kanwisher N, Saxe R	Cerebral cortex (New York, N.Y. : 1991)	0.089
Switching language switches mind: linguistic effects on developmental neural bases of 'Theory of Mind'.	Kobayashi C, Glover GH, Temple E	Social cognitive and affective neuroscience	0.088
Mental state attribution and the temporoparietal junction: an fMRI study comparing belief, emotion, and perception.	Zaitchik D, Walker C, Miller S, LaViolette P, Feczko E, Dickerson BC	Neuropsychologia	0.088
Do we mind other minds when we mind other minds' actions? A functional magnetic resonance imaging study.	Wurm MF, von Cramon DY, Schubotz RI	Human brain mapping	0.088
Direct Gaze Elicits Atypical Activation of the Theory-of-Mind Network in Autism Spectrum Conditions.	von dem Hagen EA, Stoyanova RS, Rowe JB, Baron-Cohen S, Calder AJ	Cerebral cortex (New York, N.Y. : 1991)	0.087
The special case of self-perspective inhibition in mental, but not non-mental, representation.	Hartwright CE, Apperly IA, Hansen PC	Neuropsychologia	0.087
Distinct roles of the 'shared pain' and 'theory of mind' networks in processing others' emotional suffering.	Bruneau EG, Pluta A, Saxe R	Neuropsychologia	0.085
Empathic control through coordinated interaction of amygdala, theory of mind and extended pain matrix brain regions.	Bruneau EG, Jacoby N, Saxe R	NeuroImage	0.085
A relation between rest and the self in the brain?	Wicker B, Ruby P, Royet JP, Fonlupt P	Brain research. Brain research reviews	0.084
Synchronous activation within the default mode network correlates with perceived social support.	Che X, Zhang Q, Zhao J, Wei D, Li B, Guo Y, Qiu J, Liu Y	Neuropsychologia	0.084
Regulation of the neural circuitry of emotion by compassion meditation: effects of meditative expertise.	Lutz A, Brefczynski-Lewis J, Johnstone T, Davidson RJ	PloS one	0.082
Self, mother and abstract other: an fMRI study of reflective social processing.	Vanderwal T, Hunyadi E, Grupe DW, Connors CM, Schultz RT	NeuroImage	0.082

Appendix 1 to Björnsdotter M, Davidovic M, Karjalainen L, et al. Grey matter correlates of autistic traits in women with anorexia nervosa. *J Psychiatry Neurosci* 2017.

DOI: 10.1503/jpn.170072

© 2017 Joule Inc., or its licensors

Online appendices are unedited and posted as supplied by the authors.

Neurobiological correlates of theory of mind in psychosis proneness.	Modinos G, Renken R, Shamay-Tsoory SG, Ormel J, Aleman A	Neuropsychologia	0.082
Multiple roles for executive control in belief-desire reasoning: distinct neural networks are recruited for self perspective inhibition and complexity of reasoning.	Hartwright CE, Apperly IA, Hansen PC	NeuroImage	0.082
Dysregulation between emotion and theory of mind networks in borderline personality disorder.	O'Neill A, D'Souza A, Samson AC, Carballedo A, Kerskens C, Frodl T	Psychiatry research	0.082
The development of the intrinsic functional connectivity of default network subsystems from age 3 to 5.	Xiao Y, Zhai H, Friederici AD, Jia F	Brain imaging and behavior	0.082
Children's and adults' neural bases of verbal and nonverbal 'theory of mind'.	Kobayashi C, Glover GH, Temple E	Neuropsychologia	0.081
Functional activity and effective connectivity of the posterior medial prefrontal cortex during processing of incongruent mental states.	Schuwerk T, Dohnel K, Sodian B, Keck IR, Rupperecht R, Sommer M	Human brain mapping	0.081
Neural mechanism for judging the appropriateness of facial affect.	Kim JW, Kim JJ, Jeong BS, Ki SW, Im DM, Lee SJ, Lee HS	Brain research. Cognitive brain research	0.08
The neural basis of belief encoding and integration in moral judgment.	Young L, Saxe R	NeuroImage	0.079
Differential role of temporoparietal junction and medial prefrontal cortex in causal inference in autism: An independent component analysis.	Murdaugh DL, Nadendla KD, Kana RK	Neuroscience letters	0.079
Decoding of affective facial expressions in the context of emotional situations.	Sommer M, Dohnel K, Meinhardt J, Hajak G	Neuropsychologia	0.078
Effects of aging on mindreading ability through the eyes: an fMRI study.	Castelli I, Baglio F, Blasi V, Alberoni M, Falini A, Liverta-Sempio O, Nemni R, Marchetti A	Neuropsychologia	0.078
Mentalizing in male schizophrenia patients is compromised by virtue of dysfunctional connectivity between task-positive and task-negative networks.	Das P, Calhoun V, Malhi GS	Schizophrenia research	0.078
Abnormal functional connectivity of default mode sub-networks in autism spectrum disorder patients.	Assaf M, Jagannathan K, Calhoun VD, Miller L, Stevens MC, Sahl R, O'Boyle JG, Schultz RT, Pearlson GD	NeuroImage	0.077
fMRI item analysis in a theory of mind task.	Dodell-Feder D, Koster-Hale J, Bedny M, Saxe R	NeuroImage	0.077
Inhibit yourself and understand the other: neural basis of distinct processes underlying Theory of Mind.	van der Meer L, Groenewold NA, Nolen WA, Pijnenborg M, Aleman A	NeuroImage	0.077
False belief and counterfactual reasoning in a social environment.	Van Hoeck N, Begtas E, Steen J, Kestemont J, Vandekerckhove M, Van Overwalle F	NeuroImage	0.077
Functional brain networks and white matter underlying theory-of-mind in autism.	Kana RK, Libero LE, Hu CP, Deshpande HD, Colburn JS	Social cognitive and affective neuroscience	0.076
Functional and structural brain correlates of theory of mind and empathy deficits in schizophrenia.	Benedetti F, Bernasconi A, Bosia M, Cavallaro R, Dallaspezia S, Falini A, Poletti S, Radaelli D, Riccaboni R, Scotti G, Smeraldi E	Schizophrenia research	0.074
Beyond the word and image: characteristics of a common meaning system for language and vision revealed by functional and structural imaging.	Jouen AL, Ellmore TM, Madden CJ, Pallier C, Dominey PF, Ventre-Dominey J	NeuroImage	0.074

Appendix 1 to Björnsdotter M, Davidovic M, Karjalainen L, et al. Grey matter correlates of autistic traits in women with anorexia nervosa. *J Psychiatry Neurosci* 2017.

DOI: 10.1503/jpn.170072

© 2017 Joule Inc., or its licensors

Online appendices are unedited and posted as supplied by the authors.

Supramodal representations of perceived emotions in the human brain.	Peelen MV, Atkinson AP, Vuilleumier P	The Journal of neuroscience : the official journal of the Society for Neuroscience	0.073
Common and distinct neural networks for false-belief reasoning and inhibitory control.	Rothmayr C, Sodian B, Hajak G, Dohnel K, Meinhardt J, Sommer M	NeuroImage	0.073
Mentalizing impairment in schizophrenia: a functional MRI study.	Das P, Lagopoulos J, Coulston CM, Henderson AF, Malhi GS	Schizophrenia research	0.073
A voxel-based investigation of brain structure in male adolescents with autistic spectrum disorder.	Waiter GD, Williams JH, Murray AD, Gilchrist A, Perrett DI, Whiten A	NeuroImage	0.072
Theory of mind in patients with schizophrenia: is mentalizing delayed?	Pedersen A, Koelkebeck K, Brandt M, Wee M, Kueppers KA, Kugel H, Kohl W, Bauer J, Ohrmann P	Schizophrenia research	0.072
Developmental changes of neuronal networks associated with strategic social decision-making.	Steinmann E, Schmalor A, Prehn-Kristensen A, Wolff S, Galka A, Mohring J, Gerber WD, Petermann F, Stephani U, Siniatchkin M	Neuropsychologia	0.072
Neuronal correlates of theory of mind and empathy: a functional magnetic resonance imaging study in a nonverbal task.	Vollm BA, Taylor AN, Richardson P, Corcoran R, Stirling J, McKie S, Deakin JF, Elliott R	NeuroImage	0.071
Neural mechanisms of imitation and 'mirror neuron' functioning in autistic spectrum disorder.	Williams JH, Waiter GD, Gilchrist A, Perrett DI, Murray AD, Whiten A	Neuropsychologia	0.07
Sociotopy in the temporoparietal cortex: common versus distinct processes.	Bahnemann M, Dziobek I, Prehn K, Wolf I, Heekeren HR	Social cognitive and affective neuroscience	0.07
An fMRI study of "theory of mind" in at-risk states of psychosis: comparison with manifest schizophrenia and healthy controls.	Brune M, Ozgurdal S, Ansorge N, von Reventlow HG, Peters S, Nicolas V, Tegenthoff M, Juckel G, Lissek S	NeuroImage	0.07
Familiarity modulates the functional relationship between theory of mind and autobiographical memory.	Rabin JS, Rosenbaum RS	NeuroImage	0.07
Dorsomedial prefrontal cortex activity predicts the accuracy in estimating others' preferences.	Kang P, Lee J, Sul S, Kim H	Frontiers in human neuroscience	0.07
Neural correlates of second-language communication and the effect of language anxiety.	Jeong H, Sugiura M, Suzuki W, Sassa Y, Hashizume H, Kawashima R	Neuropsychologia	0.07
Autistic adolescents show atypical activation of the brain's mentalizing system even without a prior history of mentalizing problems.	White SJ, Frith U, Rellecke J, Al-Noor Z, Gilbert SJ	Neuropsychologia	0.068
A shared neural substrate for mentalizing and the affective component of sentence comprehension.	Herve PY, Razafimandimby A, Jobard G, Tzourio-Mazoyer N	PloS one	0.067
Psychosis-proneness and neural correlates of self-inhibition in theory of mind.	van der Meer L, Groenewold NA, Pijnenborg M, Aleman A	PloS one	0.067
Validating the Why/How contrast for functional MRI studies of Theory of Mind.	Spunt RP, Adolphs R	NeuroImage	0.067
Pragmatics in action: indirect requests engage theory of mind areas and the cortical motor network.	van Ackeren MJ, Casasanto D, Bekkering H, Hagoort P, Rueschemeyer SA	Journal of cognitive neuroscience	0.065

Appendix 1 to Björnsdotter M, Davidovic M, Karjalainen L, et al. Grey matter correlates of autistic traits in women with anorexia nervosa. *J Psychiatry Neurosci* 2017.

DOI: 10.1503/jpn.170072

© 2017 Joule Inc., or its licensors

Online appendices are unedited and posted as supplied by the authors.

Neural disruption to theory of mind predicts daily social functioning in individuals at familial high-risk for schizophrenia.	Dodell-Feder D, Delisi LE, Hooker CI	Social cognitive and affective neuroscience	0.062
What gets the attention of the temporo-parietal junction? An fMRI investigation of attention and theory of mind.	Young L, Dodell-Feder D, Saxe R	Neuropsychologia	0.061
An fMRI study of the social competition in healthy subjects.	Polosan M, Baciú M, Cousin E, Perrone M, Pichat C, Bougerol T	Brain and cognition	0.061
The neural bases underlying social risk perception in purchase decisions.	Yokoyama R, Nozawa T, Sugiura M, Yomogida Y, Takeuchi H, Akimoto Y, Shibuya S, Kawashima R	NeuroImage	0.057
Disconnection mechanism and regional cortical atrophy contribute to impaired processing of facial expressions and theory of mind in multiple sclerosis: a structural MRI study.	Mike A, Strammer E, Aradi M, Orsi G, Perlaki G, Hajnal A, Sandor J, Banati M, Illes E, Zaitsev A, Herold R, Guttmann CR, Illes Z	PloS one	0.056
Neural correlates of true and false belief reasoning.	Sommer M, Dohnel K, Sodian B, Meinhardt J, Thoermer C, Hajak G	NeuroImage	0.049
Modulation of the cortical false belief network during development.	Sommer M, Meinhardt J, Eichenmüller K, Sodian B, Dohnel K, Hajak G	Brain research	0.049
Neural processing associated with cognitive and affective Theory of Mind in adolescents and adults.	Sebastian CL, Fontaine NM, Bird G, Blakemore SJ, Brito SA, McCrory EJ, Viding E	Social cognitive and affective neuroscience	0.049
Neural substrates for functionally discriminating self-face from personally familiar faces.	Platek SM, Loughhead JW, Gur RC, Busch S, Ruparel K, Phend N, Panyavin IS, Langleben DD	Human brain mapping	0.045
Functional activity of the right temporo-parietal junction and of the medial prefrontal cortex associated with true and false belief reasoning.	Dohnel K, Schuwerk T, Meinhardt J, Sodian B, Hajak G, Sommer M	NeuroImage	0.044

Table S2. Peak coordinates for social cognition regions of interest (ROIs) generated from Neurosynth using the search term 'theory mind' (false discovery rate $p < 0.01$). 236 clusters were identified; clusters > 10 voxels are shown.

Region ¹	x	y	z	Z	Nr Voxels
Right Medial Frontal	6	54	14	10.15	1647
Right Superior Temporal	58	-56	22	13.9	1469
Right Temporal Mid	48	16	-32	9.59	1267
Left Precuneus	-2	-56	40	13.63	1245
Left Superior Temporal	-54	-54	22	13.87	1093
Left Middle Temporal	-64	-8	-16	9.23	546
Right Orbital	2	48	-22	10.12	401
Left Temporal Pole	-42	26	-26	7.11	343
Right Cerebellum	4	-52	-50	8.73	287
Right Cerebellum	24	-84	-36	7.21	227
Left Middle Temporal	-56	-24	-10	8.79	213
Right Inferior Frontal	58	24	8	7.65	200
Left Cerebellum	-30	-84	-44	6.88	141
Left Superior Frontal	-8	28	64	6.54	79

Appendix 1 to Björnsdotter M, Davidovic M, Karjalainen L, et al. Grey matter correlates of autistic traits in women with anorexia nervosa. *J Psychiatry Neurosci* 2017.

DOI: 10.1503/jpn.170072

© 2017 Joule Inc., or its licensors

Online appendices are unedited and posted as supplied by the authors.

Right	Middle Frontal	24	22	36	6.38	78
Left	Superior Frontal	-12	42	52	5.44	51
Right	Cuneus	12	-86	26	5.16	41
Left	Posterior Cingulate	-16	-50	6	4.99	35
Undefined	Temporal Inf	-52	-64	46	5.38	35
Left	Middle Frontal	-40	6	50	5.42	32
Right	Fusiform	34	-36	-16	5.38	29
Left	Fusiform	-26	-44	-16	4.89	28
Right	Superior Temporal	36	2	-16	5.12	24
Left	Superior Temporal	-34	6	-20	4.85	24
Right	Cerebellum	44	-68	-54	6.57	22
Left	Pons	-4	-16	-26	6.8	21
Left	Middle Temporal	-40	-64	14	5.51	20
Left	Cerebellum	-44	-40	-46	5.05	16
Left	Superior Frontal	-20	54	-16	4.82	16
Right	Middle Temporal	44	-84	18	5.5	16
Left	Subcallosal	-4	20	-16	4.88	15
Right	Anterior Cingulate	2	38	-2	5.34	15
Right	Superior Frontal	26	36	54	4.85	15
Left	Parahippocampal	-22	-20	-26	4.41	13
Undefined	Undefined	22	18	-28	5.44	13
Undefined	Undefined	36	-8	-48	4.44	12
Right	Middle Temporal	66	-50	-6	4.86	12
Left	Middle Frontal	-20	32	40	4.39	12
Right	Cerebellum	16	-92	-34	5.77	11
Right	Undefined	28	10	38	5.16	11

[†]Automatically labeled using the xjView toolbox (<http://www.alivelearn.net/xjview>).