

Appendix 1 to Martin V, Mathieu L, Diaz J, et al. Key role of the 5-HT_{1A} receptor addressing protein Yif1B in serotonin neurotransmission and SSRI treatment. *J Psychiatry Neurosci* 2020.

DOI: 10.1503/jpn.190134

© Joule Inc.

Online appendices are unedited and posted as supplied by the authors.

Figure S1. Depressive-like behavior in Yif1B-KO vs WT littermate female mice. Total immobility recorded during the 6 min of FST was identical in WT (n=11) and Yif1B-KO (n=8) mice.

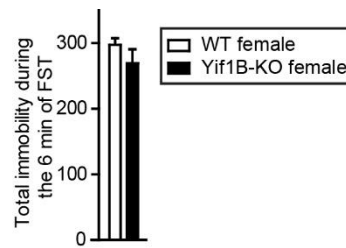


Fig.S1

DOI: 10.1503/jpn.190134

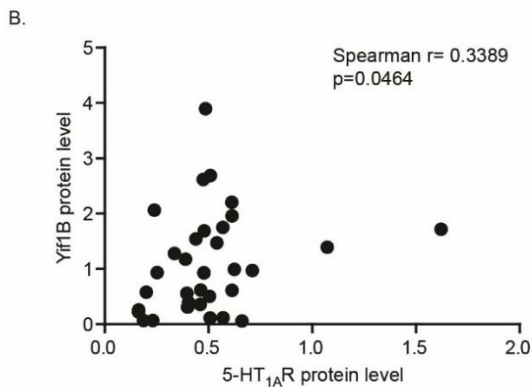
© Joule Inc.

Online appendices are unedited and posted as supplied by the authors.

Figure S2. Characteristic of the human subjects (A) and correlation between Yif1B and 5-HT_{1A}R protein levels in the PFC of subjects determined by western blot (B). A statistically significant correlation (using Spearman correlation analysis) was observed between Yif1B and 5-HT_{1A}R levels when all subjects (n=38) were analyzed together but significance was not reached for each group taken separately (control women, n=9, p=0.4101; MDD women, n=9, p=0.9768; control men, n=10, p=0.5603; MDD men, n=10, p=0.9768). F-female; M-male; W- white; B-black; PMI-post-mortem interval in hours.

A.

Sex/Race/Age [y]	PMI [h]	Sex/Race/Age [y]	PMI [h]	Age of onset [y]	Duration of MDD [y]
Control		MDD			
F/W/49	20	F/W/44	29	32	12
F/W/41	6.5	F/W/42	7	30	12
F/B/58	12	F/W/63	18	20	43
F/B/51	22	F/W/50	23	25	25
F/W/50	27	F/W/50	28	30	20
F/W/83	25	F/W/87	24	46	41
F/W/38	11	F/W/38	12	25	13
F/W/49	29	F/W/48	24	34	14
F/W/44	32	F/W/36	25	20	16
M/W/71	24	M/W/74	24	72	2
M/W/44	6	M/W/45	8	43	2
M/W/59	6	M/W/62	5	43	19
M/W/27	17	M/B/30	18	27	3
M/W/73	22	M/W/74	25	50	24
M/W/58	21	M/W/53	29	28	25
M/W/47	17	M/W/47	11	20	27
M/B/53	23	M/W/54	23	51	3
M/W/82	16	M/W/82	12	73	9
M/B/27	11	M/W/36	11	35	1



Appendix 1 to Martin V, Mathieu L, Diaz J, et al. Key role of the 5-HT_{1A} receptor addressing protein Yif1B in serotonin neurotransmission and SSRI treatment. *J Psychiatry Neurosci* 2020.

DOI: 10.1503/jpn.190134

© Joule Inc.

Online appendices are unedited and posted as supplied by the authors.

Figure S3. Schematic illustration of the interactions between Yif1B, the serotonergic system and anxio-depressive state in mice, human and monkey. Grey boxes indicate in which species data were obtained, crossing of boxes means convergent data in two different species. Whether 5-HT_{1A}R mistargeting in the brain underlies its decreased functionality will need to be further explored in the Yif1B-KO mouse model.

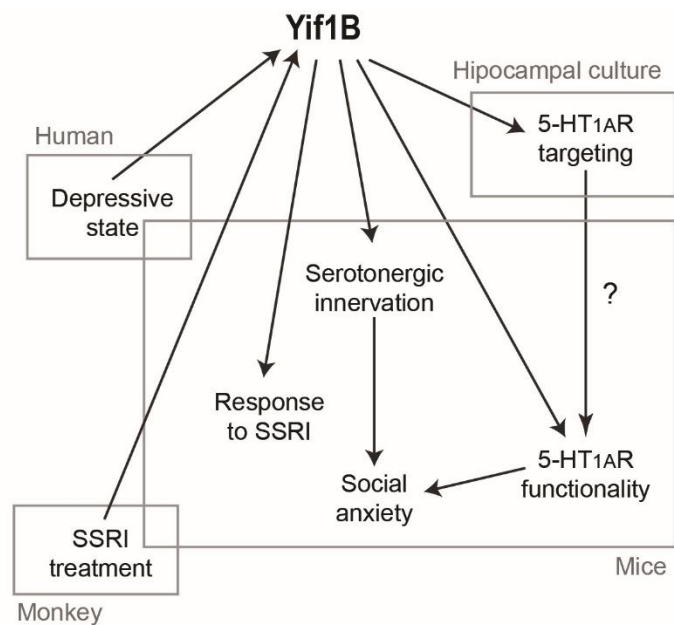


Fig.S3