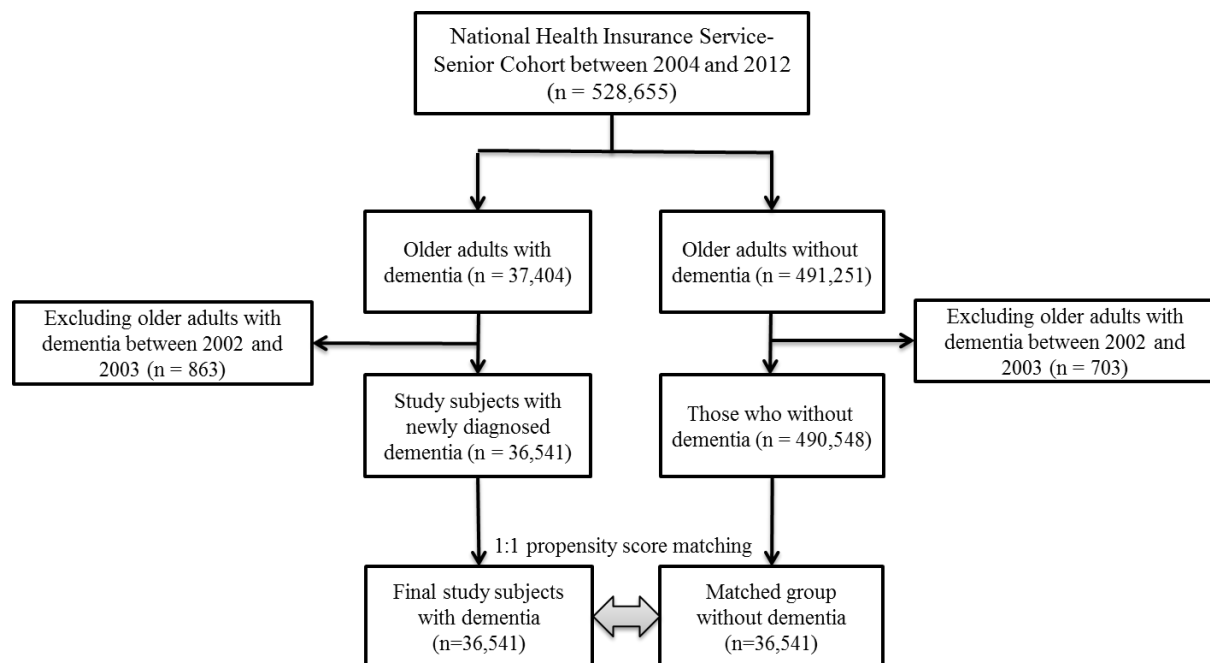


Appendix 1 to Choi JW, Lee KS, Han E. Suicide risk within 1 year of dementia diagnosis in older adults: a nationwide retrospective cohort study. J Psychiatry Neurosci 2020.

DOI: 10.1503/jpn.190219

© Joule Inc.

Online appendices are unedited and posted as supplied by the authors.



Supplementary Figure 1. Flow chart of the study participants